

## Travel Pack

(updated 1 August 2023)

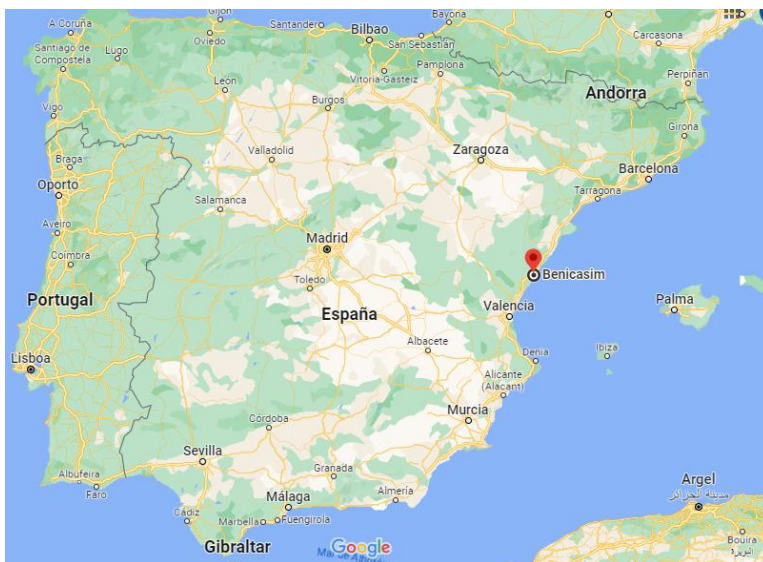
### Brief information about Benicàssim

Benicassim is a village of the Castellón province (the northernmost province of the Valencian Community). It is a small city (around 19,500 inhabitants) located at the east coast of Spain. It is also very close (15 min by car) to Castelló de la Plana which is the capital city of the province. Apart from the Spanish language, Valencian (Catalan) is also spoken.

Benicassim has 7 km of Mediterranean coast which include nice beaches. Weather is typically sunny with moderate temperatures, having average temperatures of 7.0 °C in January and 28.0 °C in August. Weather is sunny more than 300 days a year.

The city of Castelló de la Plana has recently opened an [airport](#), but with few routes. For this reason, [Valencia airport](#) is the main airport for international visitors, which is around 1 h far by car.

The city of Benicàssim, as the rest of the region, has a rich gastronomy, which is especially famous by rice dishes such as paella, black rice, “del señolet” rice, “a banda” rice (both similar to paella but with fish and seafood), fideuà, and many others. Detailed touristic information can be found [here](#).



### How to reach Castelló de la Plana

We explain first how to reach Castelló de la Plana from different airports. Later below, we explain how to reach the venue from Castelló train station. The reason for that is that although **Benicàssim** has a **train station**, **we strongly do not recommend to use it**, since it is outside of the city, in the middle of nothing, and there are neither buses nor taxis. It is better to go **from the airport at which you land to Castelló de la Plana train station**, where there are buses to the venue and taxis. Be aware that although Castelló de la Plana is the official name, it can be also mentioned as Castelló or Castellón. All these names are basically equivalent. Here we provide information about the different airports to reach Castelló:

#### 1. Castellón airport

The nearest airport from Benicàssim is **Castelló airport** (around 40 min by shuttle bus to Castelló), but it only covers a few destinations with not very frequent flights. You can check them [here](#). The information about the bus services that directly connect the airport to Castelló bus station can be found [here](#). The tickets are 12 €/journey and the schedules are adapted to the flights. Apparently, tickets can only be purchased online from [here](#) (only in Spanish). Complete the different fields like this to search your bus service:

### Buscar viajes

📍 Aeropuerto Castel ✕

🏠 Castellón ✕

📅 06/09/2023 ▼

Buscar

#### 2. Valencia airport

**Valencia airport** is the closest option if Castelló airport is not useful. It is around 1.5-2 h minimum by public transport to the venue, depending on the trains schedule, and around 60 min by car (highway without tolls).

Once you arrive at the airport you need to take the subway (metro) to “Xàtiva” station (both lines departing from the airport, 3 and 5, takes you there in around 25 min). You need to buy a single 4-zone ticket of 4.80 € + 1 € for the SUMA card, which is the support where the tickets are loaded. Tickets can be purchased from the machines or the box office at the station. More details can be found [here](#).

Once you leave “Xàtiva” station, you will see the Valencia Nord train station building, where you need to take a train to Castelló de la Plana. “Rodalies” Line C6 is the one connecting Valencia Nord with Castelló de la Plana. Be careful since the last train leaves around 22:30 h usually. The journey takes from 1 h to 90 min, depending on the number of stops along the journey, which can vary from one train to another. The timetables of the trains can be checked [here](#). You should buy a single ticket for 6 zones (5.8€ + 0.5€ for the +Renfe &Tu card, which is the support where the tickets are loaded). Tickets can be purchased from the machines (check that they are not labelled as medium or long-distance trains (media distancia, larga distancia) since those are not suitable. See the image below) or the ticket office. In-advance purchase is not available, and you have 2 hours to initiate your journey after the purchase. More info [here](#).



(Valencia Nord train station, main entrance)

### 3. Barcelona airport

**Barcelona airport** can be an especially advantageous option, since it has a lot of connections with many destinations and with more frequent flights. Although it is farther from Castelló than Valencia Airport, the train connection is good. To reach Castelló de la Plana from Barcelona airport you need to go first to “Sants” train station. It can be reached by either subway (terminal 1 and 2) or train (terminal 2). If you take the subway, it takes around 40 min. If you use the train, the journey takes around 20 min and requires no transfers. If you need to transfer between terminals, be aware that it might take some time, see [here](#) for details.

If you take the subway, you need to use line L9 Sud and leave at “Collblanc” station, where you should transfer to L5 (Vall d’Hebron direction) and travel to “Sants Estació”. The ticket is 5.15 €. You can find more information [here](#). If you use the train, you should go to terminal 2. The train line to “Barcelona Sants” station is R2 Sud, with a frequency of 30 min. The journey takes around 20 min and requires no transfers. More



information and timetables can be found [here](#). The ticket is free if you have purchased in advance the train from “Sants” to "Castellón de la Plana". This combined ticket is called "Combinado Cercanías". It can be obtained at the ticket offices or at the machines by scanning the barcode or entering the code on your ticket (ask for help if you do not find it intuitive). You need to validate it at the machines or ticket office before boarding. If you did not buy the train ticket, you should buy a single ticket for 4 zones (4.6€). Tickets can be purchased from the machines or the ticket office. In-advanced purchase is not available, and you have 2 hours to initiate your journey after the purchase. More info [here](#).

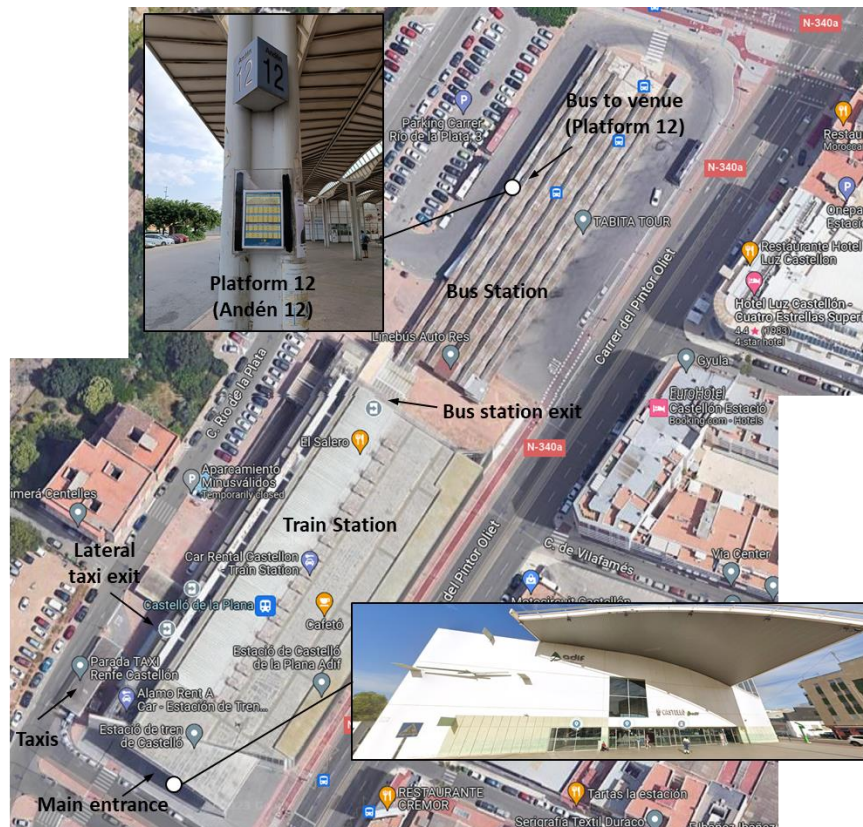
Once you are at Sants train station, you need to take a train to Castelló. They usually take 2 or 2.5 h. The tickets for these trains can be purchased in advanced, which is highly recommended, since it will be cheaper and trains can be full. The sooner you buy it the cheaper. It can be purchased on-line [here](#). It can be also purchased at the ticket offices at the station (long or medium-distance trains). Be careful since the last train to Castelló is usually around 20:15 h.

#### 4. Madrid Airport

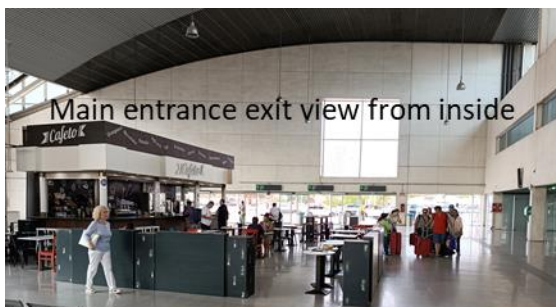
Madrid airport is the farthest of all the options. If you use it, you should go to 'Atocha-Renfe' station (or sometimes to 'Chamartin' station, depending on the origin station for your journey to Castellón) from the airport (around 45 min using either [subway](#), [train](#) or [bus](#)) and then take a long-distance train to Castelló. These trains are not very frequent and take from 3 to 4 h (timetables and tickets can be found [here](#)). In-advance purchase is again recommended for the same reasons mentioned above. The journey from “Atocha” to Castellón may take from 2.5 up to 3.5 h, and in some cases might involve a transfer in Valencia (from Valencia Joaquin Sorolla to Valencia Estació del Nord, which can be done by free shuttle buses at the exit of the station. Check if this is the case when you purchase your ticket, it is usually the case when journey duration is above 3 hours).

### How to reach the venue from Castelló de la Plana station

Once you reach Castelló de la Plana train station you can take a bus or a taxi to go to the venue. In the image below, you can see the map of the station. As you can see, the train station (at the bottom) is attached to the bus station (at the top).



You can also see in the images below the different views from the inside of the train station to the key exists:



The bus to the venue is operated by Autos Mediterráneo and takes around 30 min. The frequency of these buses is not very good. It can be found [here](#). Since it is only in Spanish, check here:

**HORARIOS AUTOBÚS**

**Castellón - Oropesa - Marina d'Or - Torreblanca**

*Del 22 de Junio al 10 de septiembre de 2023*

*Monday to Friday*

● IDA (Red)  
● VUELTA (Blue)

Castellón-venue	Castelló	Benicàssim	Playetas	Oropesa	Playa Concha	Marina d'Or - Ralla Terme	Torre La Sal	Torreblanca
		6:00	6:20	6:30	6:40	-	-	-
	8:00	8:30	8:40	8:50	9:00	9:15	9:20	9:35
	11:15	11:45	11:55	12:05	12:15	12:25	12:30	-
	12:00	12:30	12:40	12:50	13:00	13:15	-	13:30
	13:00	13:20	13:30	13:40	-	-	-	14:00
	15:30	16:00	16:10	16:20	16:30	16:40	16:45	-
	17:30	18:00	18:10	18:20	18:30	18:40	18:45	-
	20:00	20:20	20:30	20:40	-	-	-	21:00

Venue-Castellón	Torreblanca	Torre la Sal	Marina d'Or - Ralla Terme	Playa Concha	Oropesa	Playetas	Benicàssim	Castelló
	9:00	-	-	-	9:20	9:30	9:40	10:00
-	8:25	8:30	8:40	8:50	9:00	9:05	9:45	
9:40	9:55	10:00	10:15	10:20	10:30	10:35	11:15	
-	12:30	12:35	12:50	12:55	13:05	13:10	13:45	
-	16:45	16:50	17:05	17:10	17:20	17:25	18:00	
16:00	-	-	-	16:20	16:30	16:40	17:00	
-	18:45	18:50	19:05	19:10	19:20	19:25	20:00	
23:00	-	-	-	23:20	23:30	23:40	23:59	



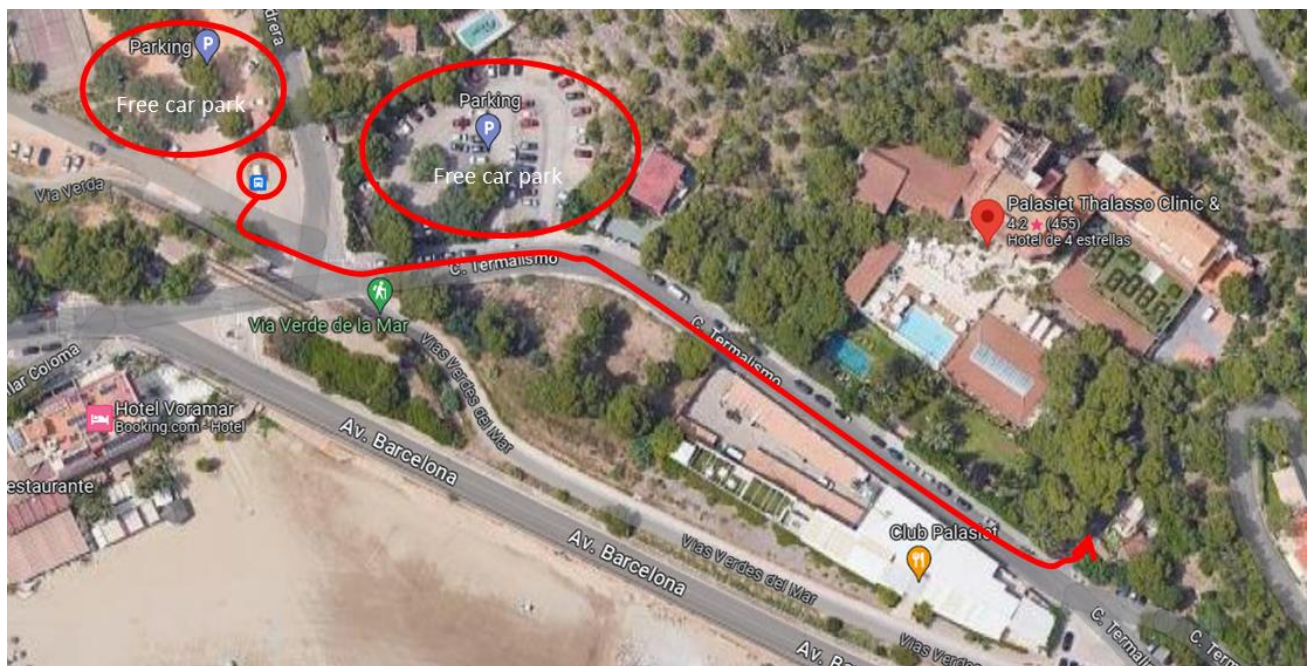
The first stop of the bus is at the bus station (platform 12, andén 12 in Spanish). See the train station map above and the images from the inside of the train station to clearly reach the location of the platform. You need to leave the bus at the stop "Avda. Barcelona (H. Voramar)", as highlighted in the image above. Departure times are indicated in the top red rectangle. During the journey in the bus, the stops are not announced, so we advise you to ask the driver to let you know when the "Hotel Voramar" stop is reached.

If you choose this bus to return to Castelló station after the Workshop, go to the same bus stop (it is the same for going and return. Do not worry if at the bus stop you do not see the information of the route, it is not there by mistake). The approximate departure times are indicated in the red bottom rectangle for "Playetas", which is the stop before the venue. In case you leave on a Saturday, Sunday or holiday, the timetables are here:

Saturday, Sunday and holidays								
Castellón-venue	Castelló	Benicàssim	Playetas	Oropesa	Playa Concha	Marina d'Or - Ralla Terme	Torre la Sal	Torreblanca
	6:00	6:20	6:30	6:40	-	-	-	7:00
	8:00	8:30	8:40	8:50	9:00	9:10	9:15	-
	11:00	11:30	11:40	11:50	12:00	12:10	12:15	-
	13:00	13:20	13:30	13:40	-	-	-	14:00
	17:00	17:30	17:40	17:50	18:00	18:10	18:15	-
20:00	20:20	20:30	20:40	-	-	-	21:00	
Venue-Castellón	Torreblanca	Torre la Sal	Marina d'Or - Ralla Terme	Playa Concha	Oropesa	Playetas	Benicàssim	Castelló
	9:00	-	-	-	9:20	9:30	9:40	10:00
	-	9:15	9:20	9:30	9:35	9:45	9:50	10:25
	-	12:15	12:20	12:30	12:35	12:45	12:50	13:25
	16:00	-	-	-	16:20	16:30	16:40	17:00
	-	18:15	18:20	18:30	18:35	18:45	18:50	19:25
23:00	-	-	-	23:20	23:30	23:40	23:59	

The price of the ticket of the bus is 1.55 € and can be purchased from the driver when boarding (only cash payment, cards are not accepted). There is also a ticket office in the bus station, but it might not be opened and it does not accept cards either, so it is better to go directly to the driver.

Once you leave the bus, walk for around 2 min in the direction shown below in the map to reach the venue.



Since the buses connecting Castelló train station to the venue have a poor frequency, you might need to take a taxi from the taxi stop at the train station. The journey will be around 20 min and the price around 20-30€ (cards are accepted usually). Indicate to the driver the Palasiet Hotel (Calle Pontazgo, 11, 12560

Benicàssim). In the weird case that you do not find a taxi at the train station taxi stop, you can contact one of these taxi companies to arrange a pick up: [Radio taxi](#) (+34 964 23 74 74) or [Su Taxi](#) (+34 964 101 101).

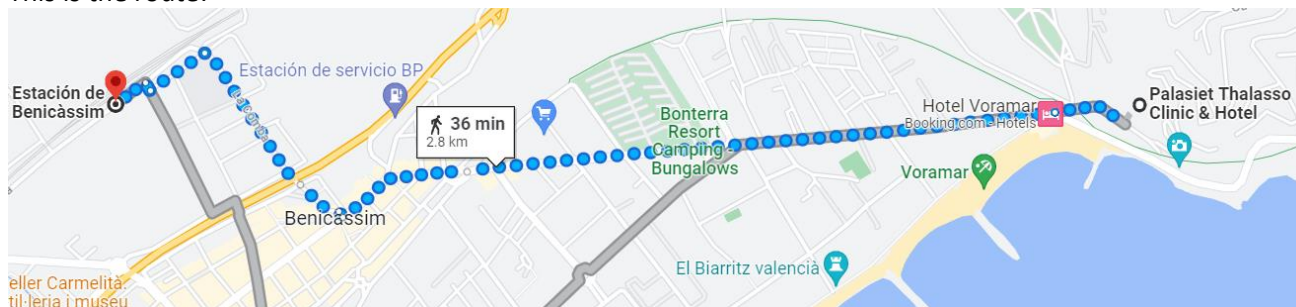
### Using a car

If you are travelling by car, set your GPS to go to the “Palasiet Thalasso Clinic & Hotel”. Coordinates are 40°3'30.59"N 0°5'15.325"W). Generally, it is easy to park along the road of the hotel or if not, at the car parks of the image above.

## How to reach the venue from Benicàssim train station

If you finally decide to use the Benicàssim train station, we describe here what you need to do. But, as mention above, be aware that it might be difficult to find transport to the venue, since there are no buses and taxis do not operate frequently in the city, so you might to be waiting for a taxi for a long time (even 30 or 45 min).

You might find direct trains to Benicàssim from Barcelona Sants station. From Madrid, you usually need to transfer in Valencia to another train or at Castelló train station. You can check the available train tickets [here](#). Once at Benicàssim train station there is the option to walk to the venue, although it takes around 35 min. This is the route:



If you want to ask for a taxi, the price will be around 10€ (cards are accepted usually). Indicate to the driver the Palasiet Hotel (Calle Pontazgo, 11, 12560 Benicàssim). You can contact one of these taxi companies to arrange the pick up: [Radio taxi](#) (+34 964 23 74 74) or [Su Taxi](#) (+34 964 101 101).

## Car renting

If you cannot travel by train due to the time of your flight, you may opt for renting a car. Depending on the airport, you can find different companies. Below we list the companies available in the Castellón and Valencia airports (for Barcelona and Madrid, you can find those mentioned for Valencia and many others).

Castellón Airport	<ul style="list-style-type: none"> <li>- MALCO Rent a Car Hire Castellon Airport</li> <li>- Interrent Castellon Aeropuerto</li> </ul>
Valencia Airport	<ul style="list-style-type: none"> <li>- Centauro Car hire</li> <li>- Enterprise Rent-a-car</li> <li>- SIXT</li> <li>- Goldcar</li> <li>- Alamo rent car</li> <li>- Europcar</li> </ul>

We recommend renting a car with an office in Castellón. Usually, the main companies are located in the train/bus station. Other companies are located in different parts of Castellón, but they are far from the city centre and the recommended hotels.

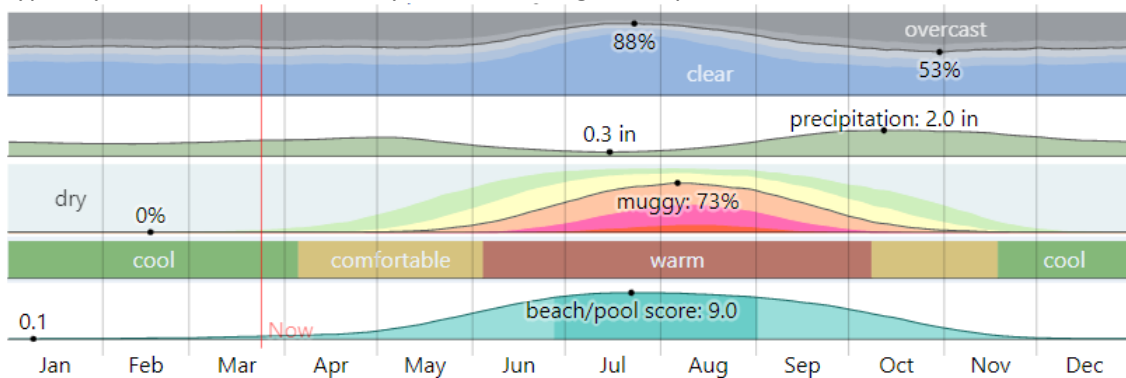
Castellón train station	<ul style="list-style-type: none"> <li>- Alamo Rent a Car</li> <li>- Europcar</li> <li>- Avis</li> <li>- Enterprise Rent-a-car</li> </ul>
-------------------------	---

Please look for the best option before travelling. Booking the car in advance is always advisable in terms of car availability and price. There are no toll roads from Madrid (A-3 highway), Castellón and Valencia (both A-

7 highway) airports to Benicassim. However, from Barcelona, you might find some tolls using the AP-7 highway.

### Other relevant information

1. **Weather:** Winter is not very cold, but summer can be relatively warm. Rain is not very frequent, although it might appear specially in autumn, and most of the days are sunny. However, weather is typically humid, and this can vary the real feeling of temperature.



2. **Currency:** Euro is the currency in Spain. In most of the places (restaurants, supermarkets, stores, etc.) you can pay by debit/credit card. Probably, the only place where you cannot pay by card is at the bus or at taxis, where you might need cash. To exchange money, we recommend [Wise](#) card, which usually provides the lowest rates.
3. **Electricity:** In Spain the power plugs and sockets are of type F. The standard voltage is 230 V and the standard frequency is 50 Hz. Type F, also known as "Schuko" also works with plug C and plug E. See more info [here](#).



4. **Water:** Tap water in Benicàssim and most of the province is drinkable, however, it is hard water, and most of the people prefer drinking bottled water. In most bars and restaurants, natural water is served by default. If you want sparkling water, you need to ask for it (and it might not be available).
5. **English language:** In general, the English language level of Spanish people is medium-low. You might find especially difficult to communicate with middle age or elderly people. Usually, young people can speak more fluently.

### If you get lost

If you get lost or you need any information at any point, phone or text **Jorge García-Cañadas (+34 722 735 600)** or **Sergio Castro-Ruiz (+34 649 320 019)**. We will be happy to help.